

Pine Ridge Indian Reservation

Population & Housing

Population: 2010

Area	Total	American Indian
Lower Brule Reservation	18,834	16,906
Jackson County	3,031	1,719
Shannon County	13,586	13,146

Source: US Census Bureau, 2010 Census, 2010 Demographic Profile Data (DP-1), Race alone or in combination with one or more other races.

Population by Age: 2010

Age	South Dakota		Pine Ridge Indian Reservation	
	Number	Percent	Number	Percent
Under 5 years	59,621	7.3	2,149	11.4
5 to 9 years	55,531	6.8	1,914	10.2
10 to 14 years	53,960	6.6	1,927	10.2
15 to 19 years	57,628	7.1	2,001	10.6
20 to 24 years	57,596	7.1	1,672	8.9
25 to 29 years	55,570	6.8	1,264	6.7
30 to 34 years	49,859	6.1	1,024	5.4
35 to 39 years	45,766	5.6	1,004	5.3
40 to 44 years	47,346	5.8	1,052	5.6
45 to 49 years	57,519	7.1	1,095	5.8
50 to 54 years		7.3	970	5.2
55 to 59 years	54,231	6.7	812	4.3
60 to 64 years	43,573	5.4	618	3.3
65 to 69 years	31,944	3.9	442	2.3
70 to 74 years	25,683	3.2	347	1.8
75 to 79 years	21,724	2.7	249	1.3
80 to 84 years	18,004	2.2	167	0.9
85 years and over	19,226	2.4	127	0.7

Source: US Census Bureau, 2010 Census, 2010 Demographic Profile Data (DP-1), Sex & Age

Housing Tenure: 2000 & 2010

Housing	Total	American Indian*
Owner Occupied	55.10%	35.90%
Renter Occupied	44.90%	54.50%

Source: US Census Bureau, 2010 Census, 2010 Demographic Profile Data (DP-1)

* From 2000 Census. 2010 Census Detail will be available in Dec 2012.

Pine Ridge Indian Reservation

Education & Income

Educational Attainment: 2000

Education Level	Total	American Indian
High School Diploma (or equivalent)	26.60%	27.20%
Some College No Degree	23.50%	22.90%
Associate Degree	7.70%	8.00%
Bachelor's Degree	7.20%	5.70%
Master's/Professional/Doctorate Degree	4.00%	2.90%

Source: Census 2000, Summary File 3 (SF 3), Educational Attainment for Population 25 Years and Over by Sex & Race.

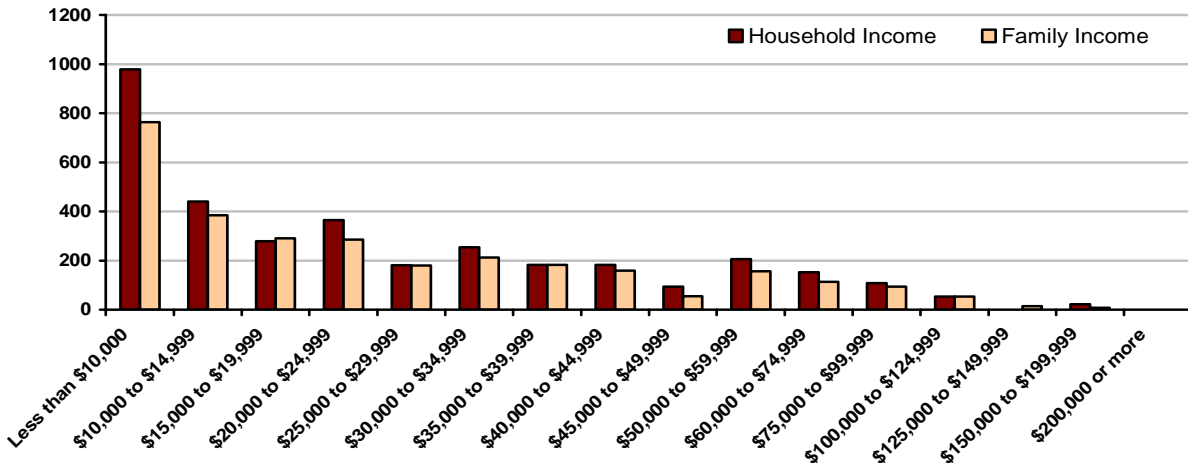
Next Update: December 2012 with release of the American Indian and Alaska Native Summary File

Income: 2000

	Household Income	Family Income
Less than \$10,000	978	764
\$10,000 to \$14,999	441	385
\$15,000 to \$19,999	279	290
\$20,000 to \$24,999	365	285
\$25,000 to \$29,999	181	179
\$30,000 to \$34,999	254	212
\$35,000 to \$39,999	182	182
\$40,000 to \$44,999	182	159
\$45,000 to \$49,999		54
\$50,000 to \$59,999	206	156
\$60,000 to \$74,999	153	113
\$75,000 to \$99,999	108	94
\$100,000 to \$124,999	53	53
\$125,000 to \$149,999	0	14
\$150,000 to \$199,999	21	7
\$200,000 or more	0	0
Total:	3,403	2,947

Median Household Income
\$20,568

Median Family Income
\$20,477



Source: Distribution of Income by Family and Household from Census 2000

Next Update: December 2012 with release of the American Indian and Alaska Native Summary File

Pine Ridge Indian Reservation

Agricultural Statistics

2007 Census of Agriculture

	All Farms	Farms Operated by American Indians
Farms		
Farms: (number)	463	266
Land in farms (acres)	2,321,399	1,505,512
Average farm size (acres)	5,014	5,660
Farms by size: (number)		
Less than 1,000 acres	177	129
1,000 acres or more	286	137
Farms by economic class		
Less than \$100,000	292	203
\$100,000 or more	171	63
Farms by type of organization: (number)		
Family, Individual, Partnership	432	249
Corporation, Cooperative, Trust	31	17
Livestock Inventory and Crops Harvested		
Livestock and Poultry Inventory (number)		
Cattle and calves	88,225	38,423
Hogs and pigs (D)	(D)	(D)
Sheep and lambs (D)	(D)	-
Horses and ponies	4,445	3,318
Bison	(D)	(D)
Chickens (layers and broilers)	344	152
Crops Harvested (acres)		
Corn for grain	6,949	688
Corn for silage or greenchop	1,944	(D)
Wheat for grain, All	75,802	10,233
Winter wheat for grain	68,779	8,473
Durum wheat for grain	-	-
Spring wheat for grain	7,023	1,760
Barley for grain (D)	(D)	(D)
Oats for grain	1,130	535
Sunflower seed, All	7,532	590
Soybeans for beans (D)	(D)	(D)
Hay, haylage, grass silage	83,820	29,857
Operator Demographics		
Primary occupation: (number)		
Farming	482	202
Other	234	146
Place of residence: (number)		
On farm operated	623	306
Not on farm operated	93	42
Years on present farm: (number)		
Less than 10 years	179	97
10 years of more	537	251
Age group: (number)		
Under 55 years	400	188
55 years and over	316	160
Average age of operators: (number)	52	53

(D) Not Disclosable

Source: USDA, Ag Census, Publications, Special Studies, American Indian Reservations, 2007, Released June 2009.

http://www.agcensus.usda.gov/Publications/2007/Online_Highlights/index.asp

Next Update: June 2014

Pine Ridge Indian Reservation

Industry & Occupations

Covered Workers & Wages: 2010 Annual Average

Industry	Avg Employment	Avg Annual Pay
<i>Jackson & Shannon County data</i>		
Total	4,397	\$29,996
Total Private	944	\$19,180
Natural Resources/Mining	*	*
Construction	95	\$22,124
Manufacturing	11	\$16,264
Trade, Transportation, and Utilities	339	\$16,318
Retail Trade	110	\$14,959
Utilities	*	*
Information	22	\$53,423
Financial Activities	16	\$37,166
Professional/Business Services	58	\$30,920
Education and Health Services	81	\$35,142
Leisure and Hospitality	241	\$10,545
Total Government	3453	\$35,196
Federal Government	707	49781
State Government	46	\$35,155
Local Government	2,701	\$30,208

Source: SD Dept. of Labor, Labor Market Information Center, Covered Workers & Pay,
http://dlr.sd.gov/lmic/menu_covered_workers.aspx, 2010 Annual Averages.

Occupations by Gender: 2000

Occupation	Total	American Indian
Total:	3,175	2,564
Male:	1,592	1207
Management, professional, and related occupations	544	364
Service occupations	332	262
Sales and office occupations	161	117
Farming, fishing, and forestry occupations	35	9
Construction, extraction, and maintenance occupations	249	225
Production, transportation, and material moving occupations	271	230
Female:	1,583	1357
Management, professional, and related occupations	647	500
Service occupations	316	308
Sales and office occupations	589	527
Farming, fishing, and forestry occupations	0	0
Construction, extraction, and maintenance occupations	9	0
Production, transportation, and material moving occupations	22	22

Source: 2000 Census.

Next Update: December 2012 with release of the American Indian and Alaska Native Summary File.

Pine Ridge Indian Reservation

Labor Force

U.S. Census Bureau (2000)*

Labor Force:	4,354
Employed:	2,901
Unemployed:	1453
Unemployment Rate:	33.40%

*Statistics represent labor characteristics of the reservation, not the tribe.

Labor Force definition:

- Civilian, non-institutional population 16 years and older
- The sum of Employment and Unemployment

Employment definition:

- Did any work as paid employees
- Worked in their own business, profession, or farm
- Worked 15 hours or more as unpaid workers in a family owned enterprise

Unemployment definition:

- Have not worked during monthly survey period
- Available for work
- Actively seeking a job during last four weeks

Unemployment Rate definition:

- Equal to the number of Unemployed divided by number in the Labor Force

Source: US Census Bureau, American Fact Finder, 2000 Census, SF3, Table P43 – Sex by Employment Status for the Population 16+ Years.

Department of the Interior (2005)*

Labor Force:	29,539
Employed:	3,131
Unemployed:	26,408
Unemployment Rate:	89.00%

* Statistics represent labor characteristics of the tribe, not the reservation.

Labor Force definition:

- Number of tribal members between 16 and 64 years old
- Available for work
- Not disabled or incarcerated

Employment definition:

- Tribal members working for money

Unemployment definition:

- Calculated by subtracting Employment from Labor Force

Source: 2005 American Indian Population and Labor Force Report, US Dept of the Interior, Bureau of Indian Affairs, Office of Tribal Services.